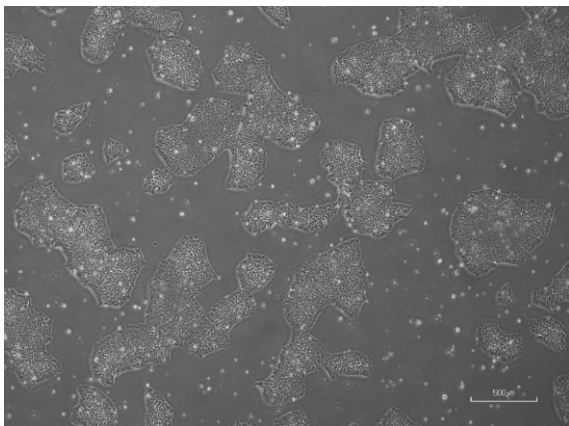
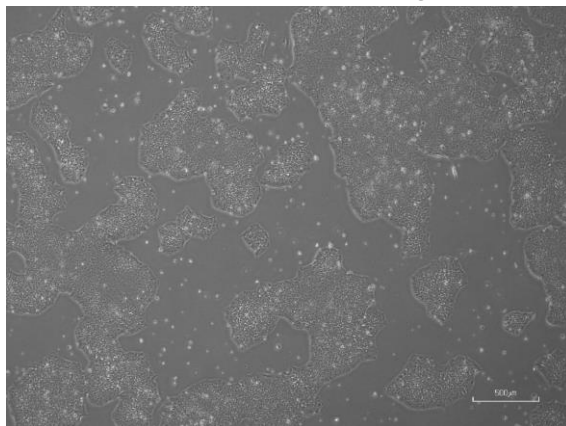


【 CiRA-jk-0110 】 Morphology of iPSC colonies

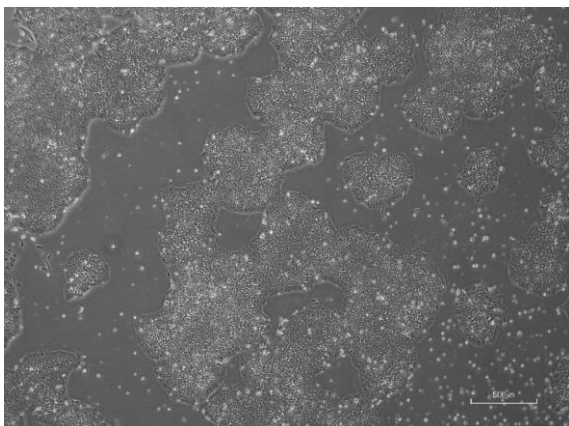
CiRA-jk-0110-A: passage-3



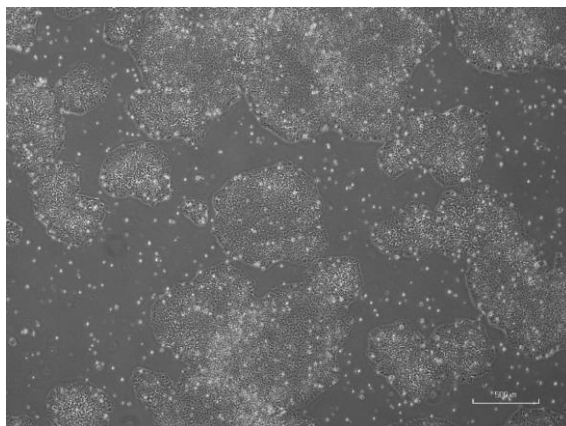
CiRA -jk-0110-B: passage-3



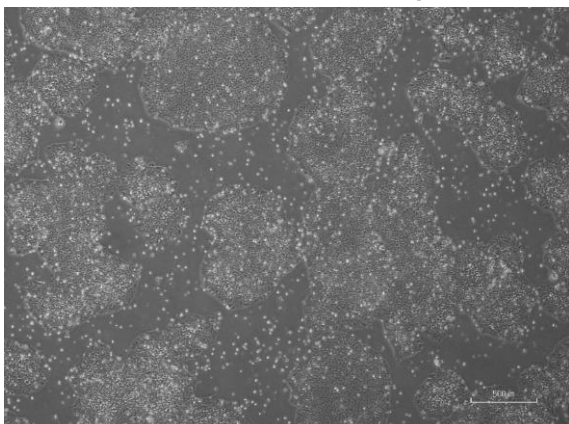
CiRA -jk-0110-C: passage-3



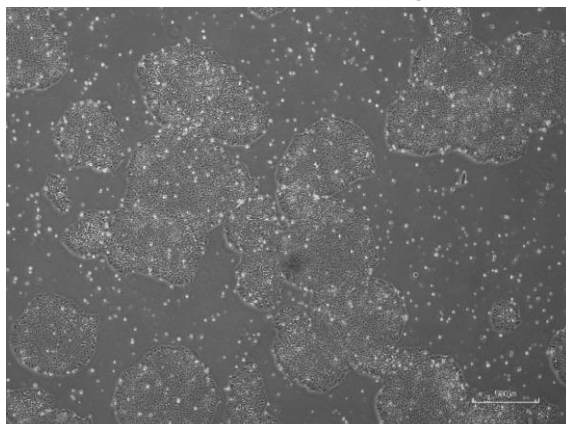
CiRA -jk-0110-D: passage-3



CiRA -jk-0110-E: passage-3



CiRA -jk-0110-F: passage-3



(All images were captured at 4x magnification)